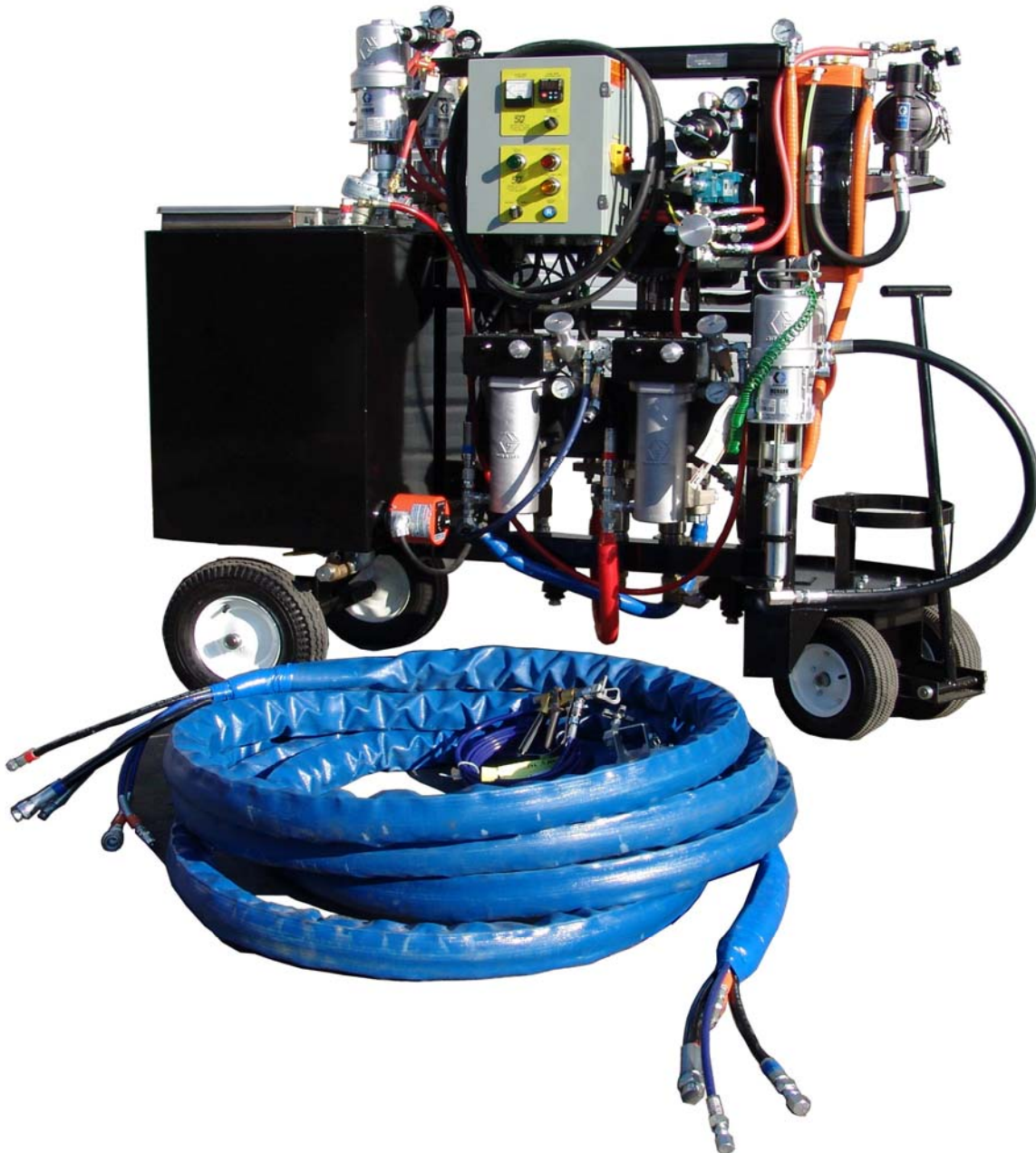




**CERTIFIED APPLICATOR**

*Equipment, Parts and Supplies Catalog*



1-800-324-2810

13105 East 61st Street South, Suite A, Broken Arrow, OK 74012  
918-615-0020 office / 918-615-0140 fax [www.ravenlining.com](http://www.ravenlining.com)

## Table of Contents

Raven Lining Systems contact info	3
Equipment Service and Repair	4
Catalog and ordering info	5
Equipment Rentals	6
Spray Gun, Tips, Guards, Gun Repair Kit, Whip Hose, Adapters	7
Mixer tubes, Manifold Parts, Valves	8
Hoses, Gauges, Hose heater, Drum blanket	9
Air Regulator, filter, Air motor rebuild kits, Pump rebuild kits	10
Specialty tools, Mil gauges, Test dollies, Y-Strainer, TSL	11
Air motor and Pump part number diagrams	12-33

## Raven Lining Systems Contact Info

For material and equipment orders please contact our  
customer service department:  
800-324-2810 or (918) 615-0020  
(918) 615-0140 Fax

For equipment problems and troubleshooting or application  
challenges please contact our  
Technical Service Specialists

Matthew Wierzchowski  
Office Direct: 918-615-1133 / Email: [mwier@ravenlining.com](mailto:mwier@ravenlining.com)  
Mobile: 918-640-2786

Or

Ryan Bauman  
Office Direct: 918-615-0136 / Email: [baumanr@ravenlining.com](mailto:baumanr@ravenlining.com)  
Mobile: 918-638-5970

***Raven is always happy to assist our applicator's with solving any equipment needs or problems that they may come across. If there are parts or equipment that is not found in this catalog please feel free to contact us.***

---

## Equipment Service and Repair

### Description

RLS offers several options for equipment service and repairs of spray equipment typically used by RLS Certified Applicators.

#### RLS Repair and Maintenance Shop

Equipment can be delivered to the RLS facility in Broken Arrow, OK for repairs or maintenance. Listed below are several common work items such as pump and air motor services. RLS will notify CA of addition parts or service required for damaged or worn components. CA is responsible for freight charges to and from RLS facility. For standard service the shop rate is \$60/hr.—service and repairs will be estimated in advance on a case by case basis. Additional cleaning charges may apply.

#### RLS Equipment Exchange Program

An alternative to down time during standard service and repairs is the RLS Equipment Exchange Program. To avoid downtime while components are serviced the CA may request an exchangeable piece of equipment be shipped. The component requested will be a completely refurbished unit in good working order. Once received, the CA then swaps components on the spray system and ships the component needing service to RLS. Upon receipt RLS inspects the component for wear or damage not covered by the exchange program. If excessive wear or damage is found the CA is notified of the cost to repair and has the option of keeping the exchange component or having their original unit repaired and shipped back. If the CA elects to keep the exchange unit the CA's unit is refurbished and added to the exchange program inventory. There is no additional fees other than the standard repair costs listed below and any additional repair items as discovered by the initial inspection. CA pays all freight to and from RLS as incurred.

Service Description		Labor/Hour
<b>RLS Equipment Service Pricing (Service &amp; Return or Exchange)</b>		
Drum Pump, 5:1 (fluid side only)		2.5hr
Monark Air Motor		2.5hr
King Air Motor		3.0hr
HydraCat #2 Pump Cylinder		1.5hr
HydraCat #7 Pump Cylinder		1.5hr
Husky 307 Diaphragm Pump		1.5hr
Mix Manifold		2.0hr
Spray Gun		1.0hr



## Raven Lining Systems, Inc.

### Equipment and Supply Catalog

The equipment, parts, tools and supplies listed in this catalog are provided as support to Raven Lining Systems Certified Applicators. All items provided by Raven Lining Systems are sold in new condition unless otherwise specified. Product suppliers may vary, however, all items have been selected for specific application in relation to equipment typically used by Raven applicators. **Pricing is subject to change. Please call for up to date price's.**



### Ordering Information

Raven Lining Systems maintains stock of many of the items herein. All items are available for shipping via UPS, Federal Express, and common freight carriers as required. All orders requiring same day shipment must be received by **11:00 am** to allow for shipment preparation. All items are shipped FOB Tulsa, OK, except in cases requiring drop shipment direct from suppliers.

Applicators may specify personnel authorized to place orders with RLS. A list of such personnel must be provided in writing to RLS. In addition, other order placement requirements such as purchase order numbers, specific shipping addresses, order confirmation, etc., must also be made in writing. Otherwise, RLS will accept orders from applicator employees on a case by case basis and will ship to the applicator's physical address. Orders will be invoiced to the applicator's credit account unless the account is past due and credit extensions have been restricted. RLS also accepts credit card payment. For COD, fees will be charged to the purchaser.



## Equipment Rentals

### Description

Raven offers equipment rentals to Certified Applicators for various application and inspection equipment. Equipment is shipped FOB from the Broken Arrow, OK facility. Rental charges apply from date of shipment to date of return. All return shipments are the responsibility of the renter and must be insured for the values listed below. Consumable supplies (such as test dillies and adhesives) are not included with the rental and must be ordered separately. Upon order a rental agreement will be supplied and must be completed and returned prior to shipment. For further details please contact us. If returned rental equipment requires repair or cleaning it will be done at the previous renter's expense.

Description	Details	Day	Week	Month	Insured Value
Adhesion Tester	Defelsko AT-A Automatic Digital	\$30	\$135	\$400	\$2,500
Holiday Tester	Tinker AP/W	\$35	\$155	\$450	\$3,000
Spray Rig	Cart mounted rig with pumps/50' hose	\$285	\$1,300	\$3,500	\$30,000
Drum Pump	Monark 5:1	\$25	\$115	\$350	\$2,000
Pressure Washer	Gas Engine, Cold, 5000 psi/4.5 GPM	\$55	\$250	\$800	\$3,500





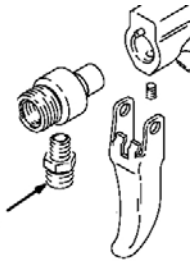
**Flex Plus Airless Gun  
with RAC V 535 tip and guard  
Pressure rating: 5000 psi**

**\$228.00 each  
Item # 248157**



**Flex Gun Repair Kit  
Rebuild kit for Graco Flex  
gun**

**\$47.56 each  
Item # 20-1930**



**Flex Gun Inlet Fitting  
Replacement fitting for  
Graco Flex gun**

**\$5.16 each  
Item # 31610**



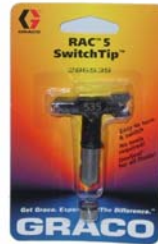
**Gun Swivel Adapter  
For connecting gun to  
whip  
1/4" male x female  
swivel**

**\$31.65 each  
Item # 12-1900**



**RAC V Guard  
For use with Graco RAC IV  
& V spray tips**

**\$28.00 each  
Item # 243161**



**RAC V Spray Tip  
Spray tips for use with  
Graco airless spray guns  
Stocked sizes:  
521, 525, 531, 535  
More sizes available  
\$35.00 each  
Item # 286535 (535tip)**

**Whip Hoses**

Nylon tube hose used to connect spray gun to mix tubes

Pressure Rating: 5000 psi; 1/4" ID hose with 1/4" jic female swivel fittings



**10' Whip Hose  
\$30.00 each  
Item # 19005**

**20' Whip Hose  
\$49.00 each  
Item # 19010**

**30' Whip Hose  
\$89.00 each  
Item # 19060**



**Steel Adapter  
Mix Manifold to Mix Tube  
3/8 mnpt x 1/2mnpt  
( MIX BLOCK REBUILD PART X1 )  
\$4.17 each  
Item #70048**



**Steel Adapter  
Mix Tube to Whip Hose  
1/2" fnpts x 1/4mnpt  
\$3.67 each  
Item #70049**



**RLS Mix Tube**  
Hose with internal static mixers (use two in-line)

1/2" ID Hose x 15" length, 1/2 fittings

\$38.50 each  
Item # 90013



**Mix Manifold (block only)**  
Mix manifold for use with RLS spray systems with (2) 3/8" inlet ports, (1) 3/8" outlet port, (2) 1/4" side ports  
( MIX BLOCK REBUILD PART X 1)  
\$125.00 each  
Item # 90016



**Check Valve, 3/8"**  
Check valve mix manifold  
Pressure Rating: 3000 psi  
Specifications: 3/8" npt male  
( MIX BLOCK REBUILD PART X 2 )  
\$40.00 each  
Item # 11560



**Check Valve, 1/4"**  
Check valve for solvent  
Pressure Rating: 3000 psi  
Specifications: 1/4" npt male  
( MIX BLOCK REBUILD PART X 1)  
\$35.00 each  
Item # 11509



**Ball Valve, 3/8"**  
Ball valve for material control—mix manifold  
Pressure Rating: 7000 psi  
3/8" npt female ports  
( MIX BLOCK REBUILD PART X 2 )  
\$135.22 each  
Item # 11410



**Needle Valve, 1/4" 90 Degree**  
Solvent control on mix manifold  
10,000 psi  
1/4" npt ports, 90 degree  
( MIX BLOCK REBUILD PART X 2 )  
\$82.97 each  
Item # 11710



**Ball Valve, 1/4"**  
Solvent valve for mix manifold  
Pressure Rating: 7000 psi  
1/4" npt female  
( MIX BLOCK REBUILD PART X 1 )  
\$60.60 each  
Item # 11360



**Ball Valve, 3/8"**  
Valve for recirc loop shut off  
Pressure Rating: 7000 psi  
3/8" npt female  
\$77.54 each  
Item # 11460



**Ball Valve, 3/8"**  
Valve for recirc loop shut off  
Pressure Rating: 5000 psi  
3/8" npt male  
\$45.67 each  
Item # 15110



**Ball Valve, 1/2"**  
Valve for bypass and recirc loops shut off  
Pressure Rating: 5800 psi  
1/2" npt female  
\$66.50 each  
Item # 11465





**High Pressure Hose, 1/4\"  
x 50', 5000 psi**  
Replacement hose for  
heated hose bundles  
1/4" npt male x 1/4" npt  
female swivel ends

**\$65.25 each**  
**Item # 19210**



**High Pressure Hose, 3/8\"  
x 50', 5000 psi**  
Replacement hose for  
heated hose bundles  
3/8" npt male x 3/8" npt  
female swivel ends

**\$152.25 each**  
**Item # 19560**



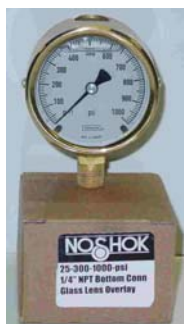
**Solvent Hose, 1/4\" x 50',  
3000 psi**  
Replacement hose for  
solvent line hose bundles  
1/4" npt male x 1/4" npt  
female swivel ends

**\$46.62 each**  
**Item # 18560**



**Water Hose, 3/8\" x 50'**  
Replacement water hose  
for heated hose bundles  
3/8" npt male x 3/8" npt  
female swivel ends  
2 wire, rubber hydraulic hose

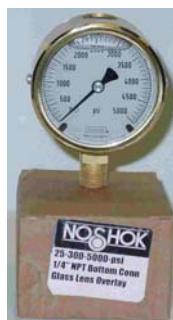
**\$131.47 each**  
**Item # 17260**



**Pressure Gauge, 1000 psi**  
2" Liquid filled gauge for  
feed pressure (lower end)

**0-1000 psi**  
**1/4" npt male bottom**

**\$86.96 each**  
**Item # 10910**



**Pressure Gauge, 5000 psi**  
2" Liquid filled gauge for  
outlet pressures

**0 - 5000 psi**  
**1/4" npt male bottom**

**\$97.83 each**  
**Item # 10960**



**Dial Thermometer**  
For heaters and drum pumps  
2" dial, 0-250 F,

**Generic Gauge**  
**\$74.12 each Item # 29110**



**Thermocouple**  
For RLS heated hose systems  
(for water heater add compression  
fitting part # 29010)

**Type J, 48" lead wire**

**\$32.50 each**  
**Item # 29060**



**Water Heater**  
For use as on the RLS water  
heated hose system

**6000W/220V Single Phase**

**\$318.00 each**  
**Item # 26260**



**Drum Blanket Heater**  
For 55 gal. drums  
**PowerBlanket**  
**120V, 770Watt, 50'F-160'F**  
**\$802.00 each**  
**Item # 15525**



**Air Regulators**  
For use with pumps and agitators  
3/8", 250 psi  
\$72.72 each Item # 26-716

3/4", 250 psi  
\$136.09 each Item # 26-713



**Mini-Air Regulator, 1/4"**  
Regulator for use with diaphragm pump on water heated hose systems  
250 psi, 1/4" npt ports

\$27.45 each  
Item # 26-710



**Air line Filter, 3/4"**  
Filter and water separator for use on air lines

250 psi, 3/4" npt ports

\$172.83 each  
Item # 13460 or 25-726



**Air line Lubricators**  
Lubricator for use with air motors

3/4", 250 psi  
\$170.42 each Item # 14360

1/2", 250 psi  
\$99.35 each Item # 14310



**King Air Motor Repair Kit**  
For Graco King air motors )

Seals & Gaskets

\$129.35 each  
Item # 207730



**Packing Kit, XTREME xp70 Cylinder**  
For 145cc Cylinder  
\$149.28 each  
Item # 262510

For 48cc Cylinder  
\$290.58 each  
Item # 262505



**Monark Air Motor Repair Kit**

For Graco Monark air motors MN 205997 (Graco Kit # 206-728)  
O-rings, snubbers, wire retainers, adjusting nuts  
\$58.52 each  
Item # 20-850



**Packing Kit, 5:1 Drum Pump, Teflon**  
For Graco 5:1 drum pump MN 218956.  
Graco #208-520

\$113.75 each  
Item # 20-607



**Packing Kit, #2 HydraCat Cylinder**

For Graco HC Cylinder 222-012

\$313.00 each  
Item # 222236



**Packing Kit, #7 HydraCat Cylinder**

For Graco HC Cylinder 222-017

\$265.22 each  
Item # 222234



**Graco Monark air motor gap tool**  
For setting gap on Monark air motor poppets (use 0.145" side)  
Steel  
\$61.46 each  
Item # 35660



**Trip Rod Pliers**  
For King and Monark air motor trip rods  
Steel, Vise grip style  
\$133.04 each  
Item # 35760



**Spanner Wrench**  
Wrench for wet cups on Graco stubby and drum pumps  
\$38.85 each  
Item # 35860



**HydraCat Cylinder Wrench**  
Hex wrench for wet cups on Graco HydraCat pump cylinders  
Steel, 1-1/2" open end wrench  
\$35.00 each  
Item # 35812



**Wet Film Thickness Gauge**  
Used to measure thickness of uncured coatings 0.4 to 400 mils,  
\$6.75 each  
Item # 43110



**Adhesion Test Dolly, 20 mm**  
20mm Diameter  
\$3.00 each  
Item # 20610  
**Adhesion Test Dolly, 50 mm**  
50 mm Diameter  
\$9.00 each  
Item # 20660



**Packing Nut/Wet Cup**  
For drum pump MN 218956  
Throat packing nut and throat lubricant cup  
\$214.35 each  
Item # 33510



**Bung Adapter**  
For drum pump MN 218956  
2" npt thread with hex head tension bolt  
\$54.14 each  
Item # 31560



**Y-Strainer w/screen**  
For use on feed pumps 3/4" npt female, .030"  
\$57.97 each  
Item # 16460



**Raven 950**  
Alternative to Graco Throat Seal Liquid (TSL)  
Used in pump wet cups  
1 Gal. Jug \$55.00 each  
Item # 9501

On the following pages are parts and equipment diagrams with the parts number list on the next page.

**STEP 1**– Find the part that you are in need of on the parts diagram and the Ref. No. that is assigned to it.

**STEP 2**– Find the Ref. No. in the parts number list on the following page and record the Part No. and description.

**STEP 3**– At the bottom of the page is a diagram number. That number lets us know which diagram the numbers have been taken from.

**STEP 4**– Give the Part No. , description of the part and the diagram number to our ordering department. With that information we will get you an up to date price quote and availability on that individual part.

If you are in need of any part that has not been included in this catalog please call us and we will do our best to supply them to you.

**Parts**

**Step 1**

**Step 3**

307044

**Example Diagram**

**Parts**

Ref. No.	Part No.	Description	Qty.
1	220485	DISPLACEMENT PUMP	1
	Series D	Includes items 3-5, 8, 10-23, 25-30 and 35-37	
2	100103	PIN, collar; 0.12" (3.2 mm) dia., 1.57 (39 mm) long	1
3	100111	NUT, jam; 0.5-20	1
4*	100279	BALL, steel; 0.88" (22.4 mm) dia.	1
5*	101178	BALL, steel; 1.25" (31.8 mm) dia.	1
6	101566	NUT, lock; 0.19 in/d	3
8†	164823	O-RING, PTFE	1
9*	156082	O-RING, nitrile rubber	1
10	156080	SEAT, piston	1
11	157184	HOUSING, piston	1
13†	162071	PACKING, cup; PTFE	2
14	158857	SPACER, packing	1
15	158830	HOUSING, intake valve	1
17	160726	PIN, stop	1
19†	162886	V-PACKING; PTFE	4

**Step 2**

Ref. No.	Part No.	Description	Qty.
20†	164782	O-RING, PTFE	1
21†	164837	GLAND, male	1
22†	165287	BEARING, PTFE	2
23†	165288	GLAND, female	1
24	248189	KIT, tie rod	3
25	165033	NUT, sahel	1
26	24C504	CYLINDER, stainless steel	1
27	24C496	RDD, displacement	1
29	171594	WASHER, backup	2
30*	204782	SEAT, intake valve	1
33	222308	ADAPTER, bung; with screw	1
34	205997	AIR MOTOR	1
		See manual 307043 for parts	
35	208312	NUT, packing	1
36	182188	HOUSING, outlet; 3/4 nptt	1
37	208314	RDD, piston	1

\* Recommended tool box spare parts. Keep those parts on hand to reduce down time.  
† Included in Repair Kit 208520.

**Step 4**  
Call Raven  
ordering department



PLEASE CALL FOR PRICING AND AVAILABILITY

# PARTS DIAGRAM FOR THE HYDRACAT ASSEMBLY

## Parts

### THREE DISPLACEMENT PUMP MODELS

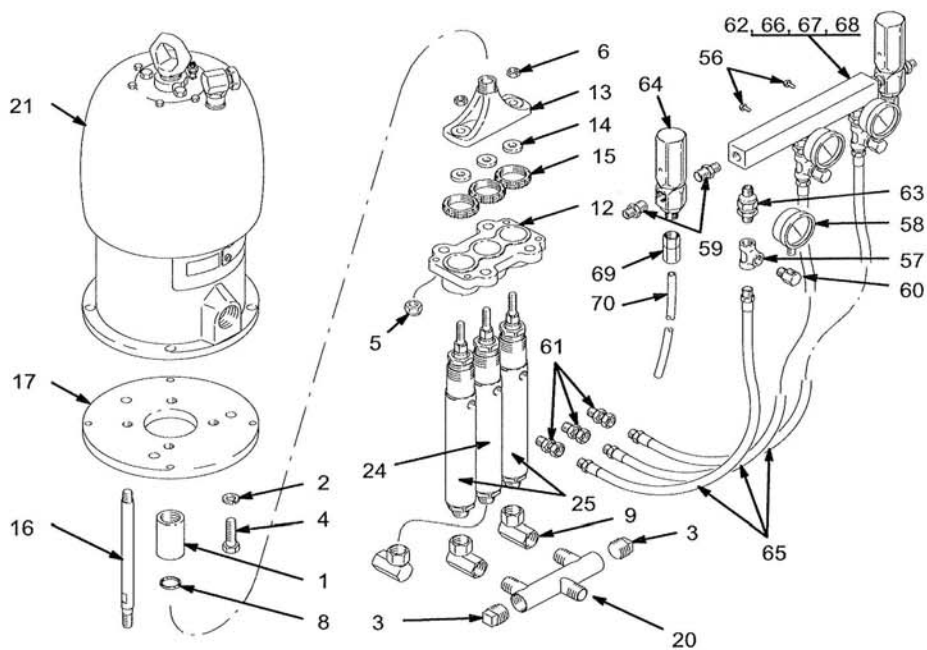
208-958, 208-999, 209-000, 209-002 and 209-003

Includes items 1-25

### 209-006 Relief Valve Kit

Includes items 56-70

(Must be purchased separately)



05233



PLEASE CALL FOR PRICING AND AVAILABILITY

## PARTS DIAGRAM FOR THE HYDRACAT ASSEMBLY

## Parts

## THREE DISPLACEMENT PUMP MODELS

208-958, 208-999, 209-000, 209-002 and 209-003

Includes items 1-25

## 209-006 Relief Valve Kit

Includes items 56-70

(Must be purchased separately)

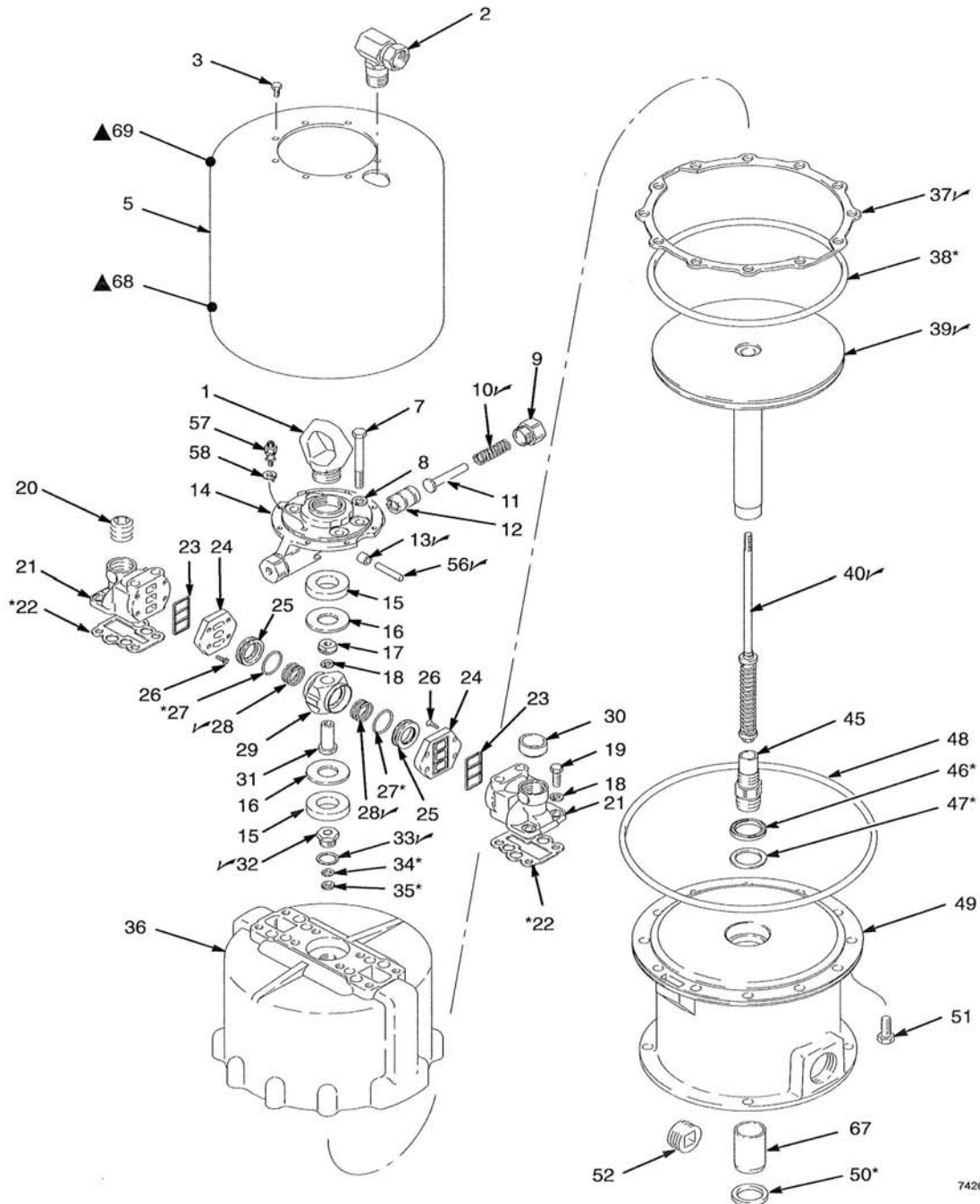
Ref No.	Part No.	Description	Qty	Ref No.	Part No.	Description	Qty
1	172-726	COUPLER	1	56	100-333	SCREW, hex hd cap; 1/4-20 x 1/2"	2
2	100-128	LOCKWASHER	3	57	100-483	TEE, pipe; 3/8 npt	2
3	100-345	PLUG, pipe; 1" npt(f)	2	58	102-814	GAUGE, air pressure; 0-5000 psi (0-35 MPa, 0-350 bar) range	2
4	100-428	SCREW, hex hd cap; 5/8-11 x 2"	3	59	159-239	NIPPLE, hex; 3/8 npt x 1/2 npt	4
5	101-712	NUT, lock; w/nylon insert, 5/8-11	4	60	164-259	ELBOW, 90° street; 1/4 npt(f) x 3/8 npt(m)	2
6	101-926	NUT, lock; w/nylon insert, 1/2-20	2	61	155-665	UNION, swivel; 3/8 npt(m x f)	2
8	150-429	GASKET, copper	1	62	170-738	MANIFOLD	1
9	156-589	UNION, 90° adapter; 3/4 npt(f) x 3/4 npsm(f)	1	63	206-962	CHECK VALVE; See 306-861 for parts	3
12	164-413	PLATE, retaining	1	64		VALVE, relief; user's choice; See 308-547 for parts; see <b>Relief Valve Selection Table</b> on page 16 for selection	2
13	164-414	YOKE, connecting rod	1	65	207-295	HOSE, cpld 3/8 npt(m); 3/8 ID x 19" (480 mm) long	2
14	164-416	WASHER, flat; 5/8 screw size	2	66	168-467	LABEL, identification	1
15	164-417	RING, retaining	2	67	168-484	MARKER, A	1
16	168-455	ROD, tie	4	68	168-485	MARKER, B	1
17	171-122	PLATE, adapter	1	69	113-187	CONNECTOR, female; tube	2
20	208-334	MANIFOLD, intake	1	70	190-738	TUBE, nylon; 36" long	2
21	208-356	AIR MOTOR	1	306, 307 and 308 numbers in description refer to separate instruction manuals.			
		See 307-049 for parts	1				
22	176-881	WRENCH, special (not shown)	1				
23	206-994	THROAT SEAL LIQUID; (TSL); 8 oz (0.2 liter) size (not shown)	1				
24		DISPLACEMENT PUMP, center; See 307-944 for parts	1				
	222-015	Model 208-958 & 209-003 only					
	222-017	Model 208-999 & 209-001 only					
	222-012	Model 209-000 only					
	222-019	Model 209-002 only					
25		DISPLACEMENT PUMP outer; See 307-944 for parts	2				
	222-019	Models 208-958 & 208-999 only					
	222-012	Models 209-000, 209-001, 209-002 & 209-003 only					

PLEASE CALL FOR PRICING AND AVAILABILITY

# PARTS DIAGRAM FOR THE KING AIRMOTOR

## Parts

Model 207647, Series L  
Includes items 1-69



PLEASE CALL FOR PRICING AND AVAILABILITY

## PARTS DIAGRAM FOR THE KING AIRMOTOR

## Parts

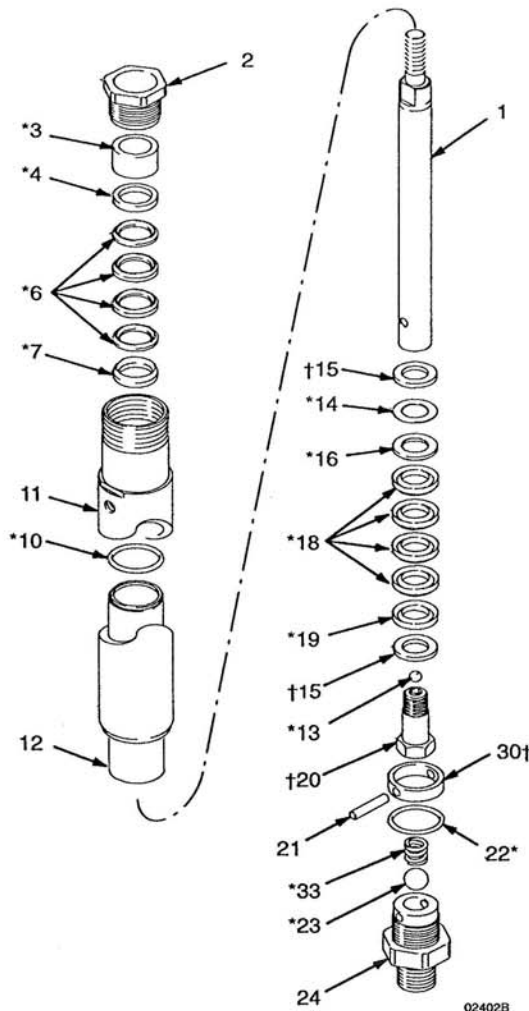
Model 207647, Series L  
Include items 1-69

Ref No.	Part No.	Description	Qty.	Ref No.	Part No.	Description	Qty.
1	180952	RING, lift	1	34*	161559	WASHER, backup	1
2	207648	UNION, 90° adapter; 3/4 npt(m) x 3/4 npsm (f) swivel	1	35*	161560	PACKING, v-block; polyurethane	1
3	113161	SCREW, hex hd flange; 1/4-20 x 1/2 in. long	8	36	168191	CYLINDER, air motor	1
5	168188	SHIELD, air motor	1	37✓	168189	GASKET, cylinder; rubber-impregnated cellulose	1
7	101713	SCREW, hex hd cap; 7/16-14 x 3-1/2 in.	4	38*	102727	O-RING; nitrile rubber	1
8	100052	LOCKWASHER, spring; 7/16 in.	4	39✓	218962	PISTON ASSY	1
9	161587	RETAINER, detent spring	2	40✓	214852	TRIP ROD ASSY	1
10✓	161589	SPRING, compression	2	45	168180	STUD, connecting rod	1
11	161588	GUIDE, spring	2	46*	161562	PACKING, v-block; buna-N	1
12	169583	PLUNGER, detent	2	47*	161563	WASHER, backup	1
13✓	169585	ROLLER, axle	2	48	102737	O-RING; nitrile rubber	1
14	177664	HOUSING, detent	1	49	235844	BASE, air motor; includes item 67	1
15	161577	PAD, rubber	2	50*	161569	SEAL, felt wiper	1
16	161576	WASHER, flat	2	51	100424	SCREW, hex hd cap; 1/2-13 x 1-1/4 in. long	12
17	161586	NUT, trip rod; 3/8-24	1	52	102725	PLUG, pipe, socket; 1-1/4 npt	1
18	100133	LOCKWASHER, spring; 3/8 in.	5	56✓	169586	AXLE, detent	2
19	100101	SCREW, hex hd cap; 3/8-16 x 1 in. long	4	57	104029	LUG, grounding	1
20	102726	PLUG, pipe; socket hd; 3/4 npt	1	58	104582	WASHER, tab	1
21	168187	MANIFOLD, air	2	67	189059	BEARING	1
22*	168183	GASKET, air manifold	2	68▲	290331	LABEL, warning; English	1
23	168184	SEAL, valve plate; buna-N	2	69▲	189991	LABEL, warning	1
24	169584	PLATE, valve	2	* These parts are included in Repair Kit 207730, which may be purchased separately. ✓ Keep these spare parts on hand to reduce down time. ▲ Replacement Danger and Warning labels, tags and cards are available at no cost. The 290331 label is also available in the following languages: German (Part No. 290396) French (Part No. 290397) Spanish (Part No. 290398).			
25	168182	VALVE, air director	2				
26	101716	SCREW, flat hd machine; no. 10-24 x 1/2 in. long	8				
27*	156698	O-RING; buna-N	2				
28✓	161575	SPRING, compression	2				
29	161585	HOUSING, air valve	1				
30	168185	GROMMET	1				
31	161590	HUB, valve housing	1				
32✓	204649	BEARING, trip rod	1				
33✓	150647	GASKET	1				

PLEASE CALL FOR PRICING AND AVAILABILITY

## PARTS DIAGRAM FOR THE #2 &amp; #7 HYDRACAT CYLINDERS

## Parts



## Model 222012, Series C

Ref. No.	Part No.	Description	Qty.
1	181513	ROD, displacement; sst	1
2	192174	NUT, packing; cst	1
3*	188402	SPACER, packing; sst	1
4*	181725	GLAND, female; cst	1
6*	183757	V-PACKING; PTFE	4
7*	181726	GLAND, male; cst	1
10*	109115	O-RING; PTFE	1
11	181649	CYLINDER, pump; cst	1
12	181510	SLEEVE, cylinder; sst	1
13*	101823	BALL; 5/16" dia.; sst	1
14*	189314	SHIM; sst	8
15†	176107	WASHER, back-up; cst	2
16*	181664	GLAND, male; cst	1
18*	165104	V-PACKING; PTFE	4
19*	181663	GLAND, female; cst	1
20†	205383	STUD, piston; cst, w/carbide seat	1
21	165049	PIN, stop, ball; sst	1
22*	109176	O-RING; PTFE	1
23*	100064	BALL; 5/8" dia.; cst	1
24	220297	HOUSING, valve, intake; cst, w/carbide seat	1
30†	185265	RETAINER, o-ring; sst	1
33*	510956	SPRING, compression	1

\* These parts are also included in Repair Kit 236597, which may be purchased separately.

† Keep these spare parts on hand to reduce down time.

## Model 222017, Series C

Ref. No.	Part No.	Description	Qty.
1	181660	ROD, displacement; sst	1
2	192174	NUT, packing; cst	1
3*	181659	BEARING, sleeve; acetal	1
4*	181719	GLAND, female; cst	1
6*	183861	V-PACKING; PTFE	4
7*	181720	GLAND, male; cst	1
10*	109115	O-RING; PTFE	1
11	181649	CYLINDER, pump; cst	1
12	181508	SLEEVE, cylinder; sst	1
13*	101823	BALL; 5/16" dia.; sst	1
14*	188204	SHIM; sst	8
15†	164391	WASHER, back-up; cst	2
16*	181722	GLAND, male; cst	1
18*	183759	V-PACKING; PTFE	4
19*	181721	GLAND, female; cst	1
20†	205388	STUD, piston; cst, w/carbide seat	1
21	165049	PIN, stop, ball; sst	1
22*	109176	O-RING; PTFE	1
23*	100064	BALL; 5/8" dia.; cst	1
24	220297	HOUSING, valve, intake; cst, w/carbide seat	1
30†	185265	RETAINER, o-ring; sst	1
33* @	510956	SPRING, compression	1

\* These parts are also included in Repair Kit 236595, which may be purchased separately.

† Keep these spare parts on hand to reduce down time.

@ If this pump is being used in a VRHM system, spring 501095 is used. Purchase separately for repair.



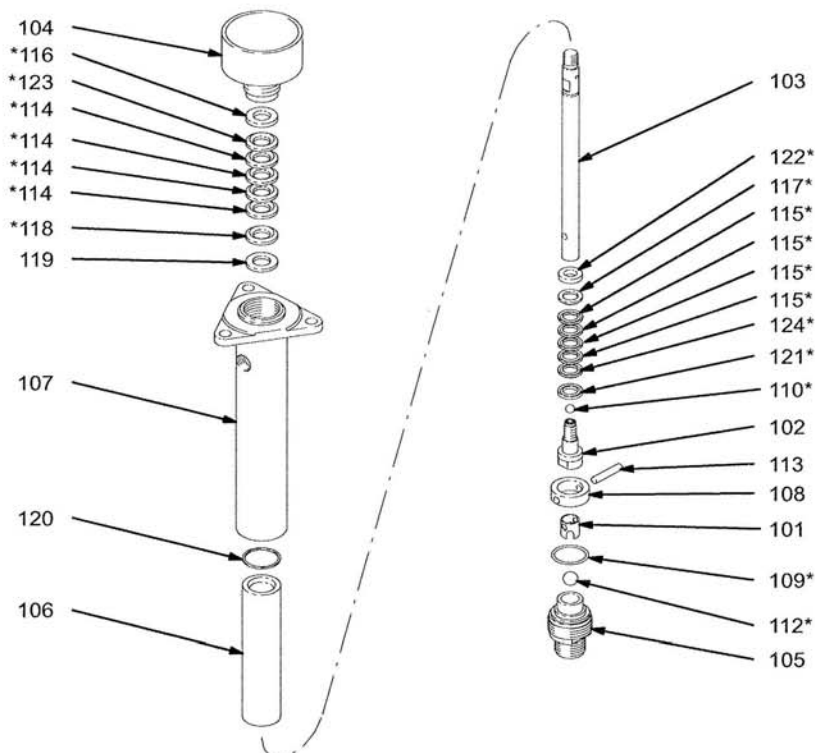
PLEASE CALL FOR PRICING AND AVAILABILITY

## PARTS DIAGRAM FOR THE 23:1 SOLVENT CYLINDER

## Parts

## Model 223-595, Series D

Carbon steel severe-duty displacement pump with stainless steel glands, intake housing, piston valve, and ball stop



02101A

Ref No.	Part No.	Description	Qty	Ref No.	Part No.	Description	Qty
101	186-187	GUIDE, ball, intake, stainless steel	1	114*	164-397	V-PACKING, throat, leather	4
102	223-591	STUD, piston, stainless steel with tungsten carbide seat	1	115*	184-300	V-PACKING, piston, leather	4
103	223-603	ROD, displacement, stainless steel	1	116*	186-194	GLAND, throat, female, stainless steel	1
104	206-269	PACKING NUT/WET-CUP, CST	1	117*	186-195	GLAND, piston, male, stainless steel	1
105	223-593	HOUSING, valve, intake, SST with tungsten carbide seat	1	118*	186-196	GLAND, throat, male, stainless steel	1
106	178-898	SLEEVE, housing, stainless steel	1	119	186-197	WASHER, flat, stainless steel	1
107	207-011	HOUSING, outlet, carbon steel	1	120	164-480	GASKET, flat, Teflon®	1
108	186-183	RETAINER, o-ring, stainless steel	1	121*	186-198	GLAND, piston, female, stainless steel	1
109*	165-052	O-RING, Teflon®	1	122*	186-199	RETAINER, packing, stainless steel	1
110*	105-444	BALL, 440C stainless steel, 0.31 in. (7.9 mm) dia.	1	123*	164-913	V-PACKING, throat, Teflon®	1
112*	105-445	BALL, 440C stainless steel, 0.5 in. (13 mm) dia.	1	124*	164-912	V-PACKING, piston, Teflon®	1
113	186-179	PIN, ball stop, intake, stainless steel	1	125 ▲	172-479	TAG, warning (not shown)	1

\* These parts are included in Repair Kit 239-328, which may be purchased separately. See page 14 for additional parts.

▲ Replacement danger and warning labels, tags, and cards are available for free.

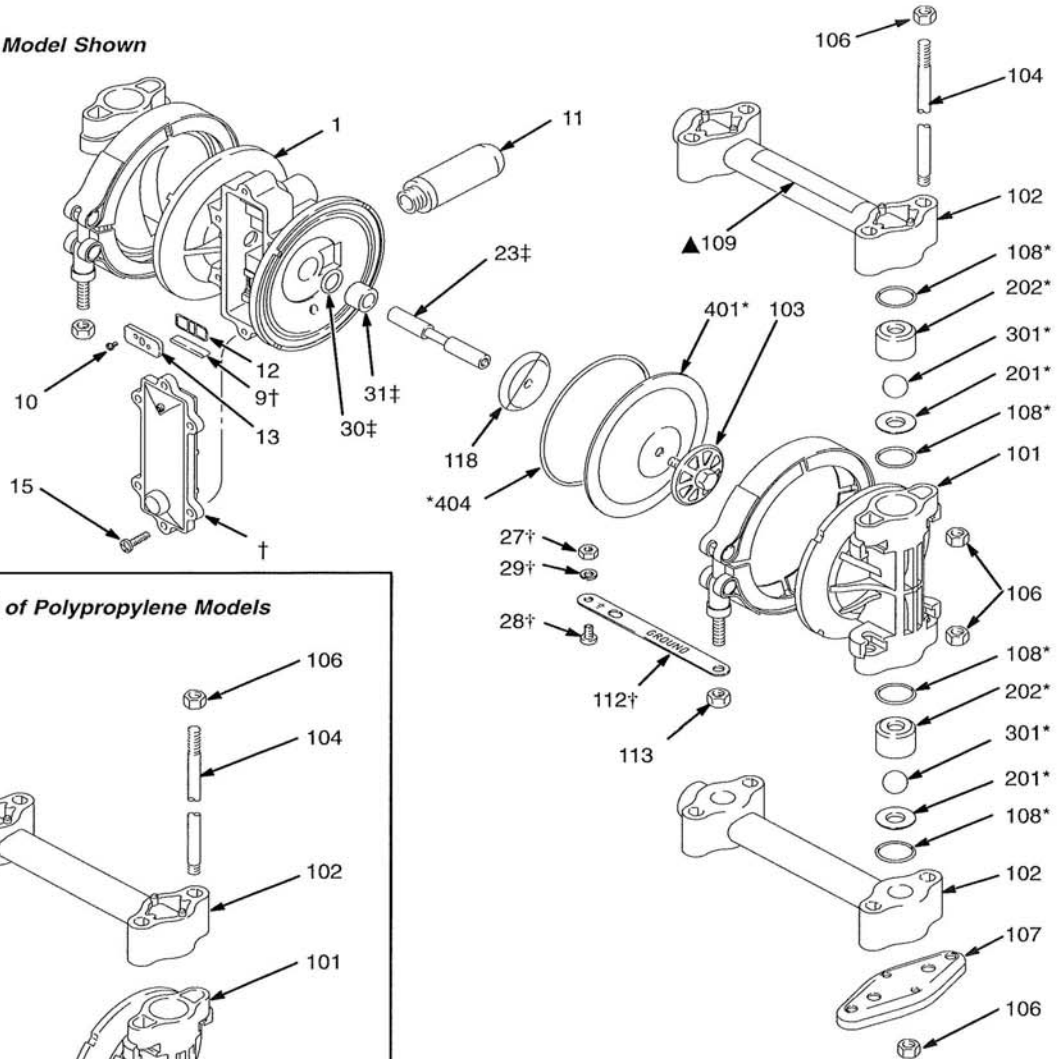


PLEASE CALL FOR PRICING AND AVAILABILITY

# PARTS DIAGRAM FOR THE HUSKY 307

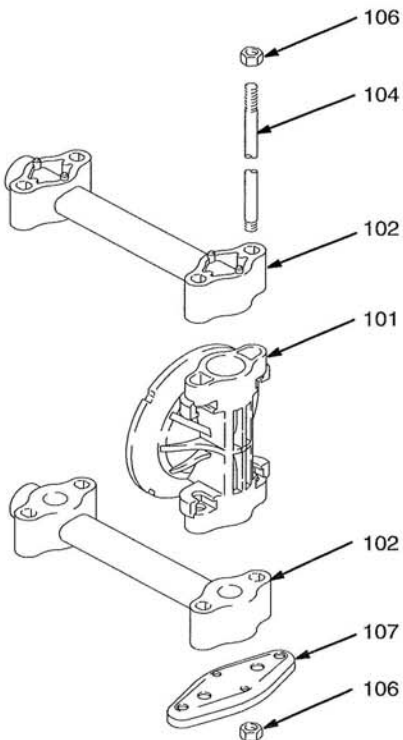
## Parts

Acetal Model Shown



01429E

Detail of Polypropylene Models



\* Included in Pump Repair Kit, which may be purchased separately. See page 27.

† Included in Air Valve Kit 239952, which may be purchased separately. See parts list on page 28.

▲ Replacement Danger and Warning labels, tags and cards are available at no cost.

‡ Included in Diaphragm Shaft Kit 239014, which may be purchased separately.

† Not supplied with Polypropylene pump.

PLEASE CALL FOR PRICING AND AVAILABILITY

## PARTS DIAGRAM FOR THE HUSKY 307

## Parts

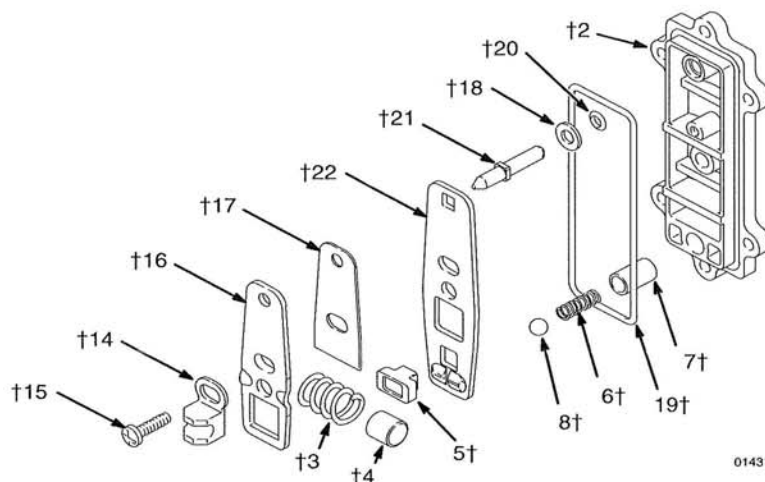
## Air Motor Parts List (Matrix Column 2)

Digit	Ref. No.	Part No.	Description	Qty
3	1	187705	HOUSING, center; polypropylene; see page 29	1
	2†	187706	COVER, air valve; polypropylene	1
	3†	187722	SPRING, compression; sst	1
	4†	187853	STOP, link; acetal	1
	5†	192675	CUP, valve; acetal	1
	6†	187728	SPRING, compression; sst	1
	7†	187730	COLLAR, detent; sst	1
	8†	111629	BALL, detent; carbide	1
	9†	187726	BEARING, link; acetal; see page 29	1
	10	111631	SCREW, thread-forming; 1/4-20; 0.375 in. (9.5 mm) long; see page 29	2
	11	112933	MUFFLER; see page 29	1
	12	187719	SEAL, plate, valve; buna-N; see page 29	1
	13	187720	PLATE, valve; sst; see page 29	1
	14†	187718	SADDLE, shift; acetal	1
	15†	111630	SCREW, thread-forming; 10-14 size; 0.75 in. (19 mm) long; see below and page 29	7

Digit	Ref. No.	Part No.	Description	Qty
	16†	187724	LINK, actuator; sst	1
	17†	188175	SPACER, link; acetal	1
	18†	111750	WASHER, plain; sst	1
	19†	111624	O-RING; buna-N	1
	20†	111625	O-RING; buna-N	1
	21†	187727	SHAFT, reset; sst	1
	22†	192526	LINK, detent; sst	1
	23‡	191781	SHAFT, diaphragm; sst; see page 29	1
	26†	111920	GREASE, general purpose; 0.375 oz. (10.5 g); not shown	1
	27	100179	NUT, hex; 10-24; see page 29	1
	28	102790	SCREW; 10-24; 0.75 in. (19 mm) long; see page 29	1
	29	100718	LOCKWASHER, int. tooth; no. 10; see page 29	1
	30‡	113704	PACKING, u-cup; Viton®	2
	31‡	191779	BEARING; acetal	2

† These parts are included in Air Valve Kit 239952, which may be purchased separately. The kit includes only one screw (15), shown below, and a tube of grease (26).

‡ These parts are included in Diaphragm Shaft Kit 239014, which may be purchased separately.



01431A

PLEASE CALL FOR PRICING AND AVAILABILITY

## PARTS DIAGRAM FOR THE HUSKY 307

## Parts

## Fluid Section Parts List (Matrix Column 3)

Digit	Ref. No.	Part No.	Description	Qty
1	101	187701	COVER, fluid; acetal with conductive sst fibers	2
	102	235337	MANIFOLD; acetal with conductive sst fibers	2
	103	187711	PLATE, fluid side; acetal	2
	104	188999	ROD, tie; 5/16-18	4
	106	117233	NUT; 5/16-18	8
	107	187721	FEET	2
	108	111603	O-RING; PTFE	8
	109	187732	LABEL, warning	1
	▲			
	111	187820	CLAMP	2
	113	112499	NUT, clamp; 1/4-28	2
	118	191741	PLATE, air side; sst	2
	119	183901	TAG, re-torque (not shown)	1
2	101	187702	COVER, fluid; polypropylene	2
	102	235338	MANIFOLD; polypropylene	2
	103	187712	PLATE, fluid side; polypropylene	2
	104	188999	ROD, tie; 5/16-18	4
	106	117233	NUT; 5/16-18	8
	107	187721	FEET	2
	108	111603	O-RING; PTFE	8
	109	187732	LABEL, warning	1
	▲			
	111	187820	CLAMP	2
	112	191079	STRIP, grounding	1
	113	112499	NUT, clamp; 1/4-28	2
	118	191741	PLATE, air side; sst	2
	119	183901	TAG, re-torque (not shown)	1

Digit	Ref. No.	Part No.	Description	Qty
A	101	187701	COVER, fluid; acetal with conductive sst fibers	2
	102	239146	MANIFOLD; acetal with conductive sst fibers; BSPT	2
	103	187711	PLATE, fluid side; acetal	2
	104	188999	ROD, tie; 5/16-18	4
	106	117233	NUT; 5/16-18	8
	107	187721	FEET	2
	108	111603	O-RING; PTFE	8
	109	187732	LABEL, warning	1
	▲			
	111	187820	CLAMP	2
	113	112499	NUT, clamp; 1/4-28	2
	118	191741	PLATE, air side; sst	2
	119	183901	TAG, re-torque (not shown)	1
B	101	187702	COVER, fluid; polypropylene	2
	102	239147	MANIFOLD; polypropylene; BSPT	2
	103	187712	PLATE, fluid side; polypropylene	2
	104	188999	ROD, tie; 5/16-18	4
	106	117233	NUT; 5/16-18	8
	107	187721	FEET	2
	108	111603	O-RING; PTFE	8
	109	187732	LABEL, warning	1
	▲			
	111	187820	CLAMP	2
	112	191079	STRIP, grounding	1
	113	112499	NUT, clamp; 1/4-28	2
	119	183901	TAG, re-torque (not shown)	1

PLEASE CALL FOR PRICING AND AVAILABILITY

## PARTS DIAGRAM FOR THE HUSKY 307

## Parts

Seat Parts List (Matrix Column 4)

Digit	Ref. No.	Part No.	Description	Qty
2	201*	187709	SEAT; acetal	4
	202*	187707	GUIDE; acetal	4
3	201*	190245	SEAT; 316 stainless steel	4
	202*	187707	GUIDE; acetal	4
9	201*	187710	SEAT; polypropylene	4
	202*	187708	GUIDE; polypropylene	4

Ball Parts List (Matrix Column 5)

Digit	Ref. No.	Part No.	Description	Qty
1	301*	111626	BALL; PTFE	4
3	301*	112926	BALL; 316 stainless steel	4
5	301*	111627	BALL; Hytrel®	4
6	301*	113221	BALL; Santoprene®	4
7	301*	112884	BALL; buna-N	4

Diaphragm Parts List (Matrix Column 6)

Digit	Ref. No.	Part No.	Description	Qty
1	401*	187716	DIAPHRAGM; PTFE	2
	404*	166071	O-RING; buna-N	2
5	401*	187715	DIAPHRAGM; Hytrel®	2
	404*	166071	O-RING; buna-N	2
6	401*	190754	DIAPHRAGM; Santoprene®	2
	404*	166071	O-RING; buna-N	2
7	401*	190209	DIAPHRAGM; buna-N	2
	404*	166071	O-RING; buna-N	2

PLEASE CALL FOR PRICING AND AVAILABILITY

## PARTS DIAGRAM FOR THE MONARK AIRMOTOR

## Parts

**Model 205997, Series K****Air Motor Assembly**

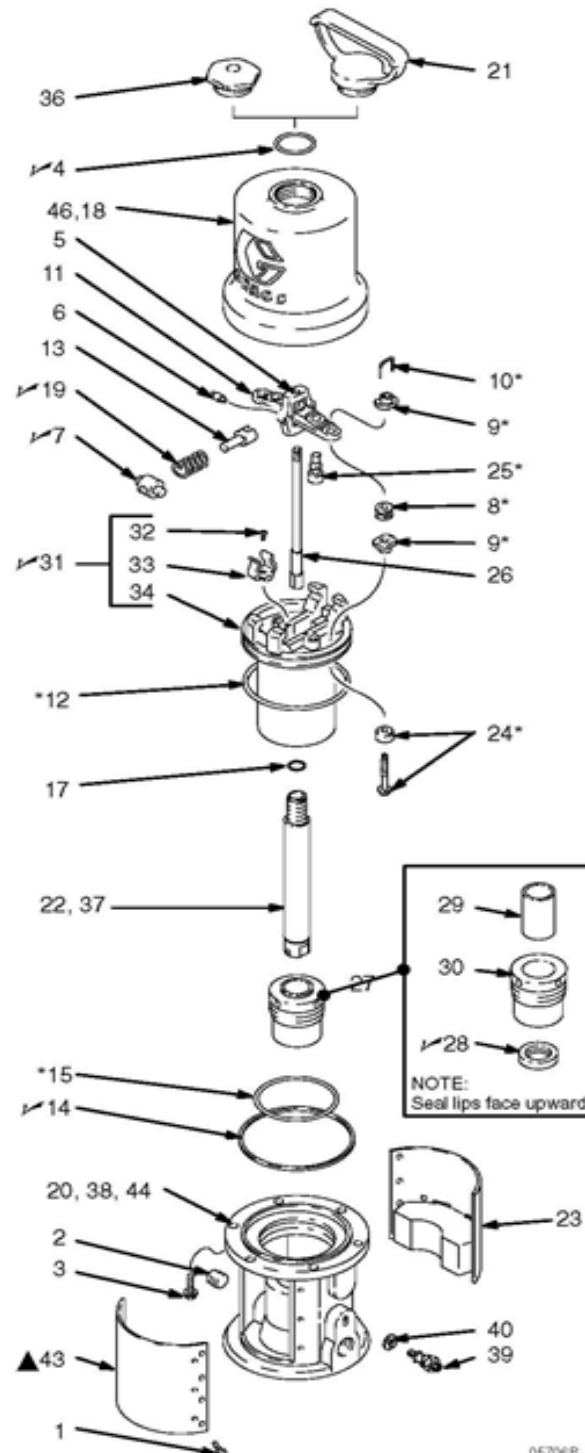
Includes: 1, 3-19, 23, 25-34, 36-43

**Model 215363, Series D****Air Motor Assembly**

Includes: 1, 3-19, 21, 23, 25-34, 37-43

**Model 222791, Series D****Air Motor Assembly**

Includes: 1-23, 25-34, 39-43





PLEASE CALL FOR PRICING AND AVAILABILITY

## PARTS DIAGRAM FOR THE MONARK AIRMOTOR

## Parts

**Model 205997, Series K Air Motor Assembly**

Includes: 1, 3-19, 23, 25-34, 36-43

**Model 215363, Series D Air Motor Assembly**

Includes: 1, 3-19, 21, 23, 25-34, 37-43

**Model 222791, Series D Air Motor Assembly**

Includes: 1-23, 25-34, 39-43

Ref. No.	Part No.	Description	Qty.	Ref. No.	Part No.	Description	Qty.
1	114422	SCREW, phillips hd mach; no. 8-32 x 0.375 in. (10 mm) long	16	31✓	214036	PISTON Assy; Includes items 32-34 (also includes repair kit 206728 when ordered as a replacement part)	1
2	100361	PLUG, pipe; 1/2 in. npt	1	32	102975	• SCREW, rd hd mach; no. 6-32 x 0.25" (6.3 mm)	2
3	101578	SCREW, hex head; 5/16 x 0.875 in. (10 mm) long	6	33	172866	• CLIP, spring	2
4✓	156698	O-RING; buna-N	1	34		• PISTON, bare (not sold separately)	1
5	158360	YOKE, rod, trip	1	36	161435	NUT, cap	1
6	158362	PIN, toggle	2	37	177136	ROD, piston	1
7✓	158364	ROCKER, toggle	2	38	205998	BASE	1
8*	158367	GROMMET, rubber, air intake	2	39	104029	LUG, grounding	1
9*	160261	NUT, adjusting	4	40	104582	WASHER, tab	1
10*	160618	LOCKWIRE, transfer valve	2	42	180233	LABEL, warning	1
11	172867	ACTUATOR, valve	1	43▲	241650	PLATE, warning (English)	1
12*	160621	O-RING, nitrile rubber	1	44	609354	BASE	1
13	160623	ARM, toggle	2	46	609353	CYLINDER	1
14✓	160624	O-RING, buna-N	1				
15*	160625	O-RING, buna-N	1				
17✓	160932	GASKET; copper	1				
18	164186	CYLINDER	1				
19✓	167585	SPRING, helical compression	2				
20	184270	BASE	1				
21	164704	NUT, cap; with carry handle	1				
22	164705	ROD; piston	1				
23	241651	PLATE, identification	1				
24*	236079	POPPET, valve; urethane	2				
25*	170709	POPPET, valve; urethane	2				
26	203965	ROD, trip	1				
27	205529	BEARING HOUSING; Includes 28-30	1				
28✓	16H224	• SEAL	1				
29	101526	• BEARING	1				
30	164701	• NUT, packing	1				

✓ Keep these spare parts on hand to reduce down time.

\* These parts are included in Repair Kit 206728, which may be purchased separately. See page 16.

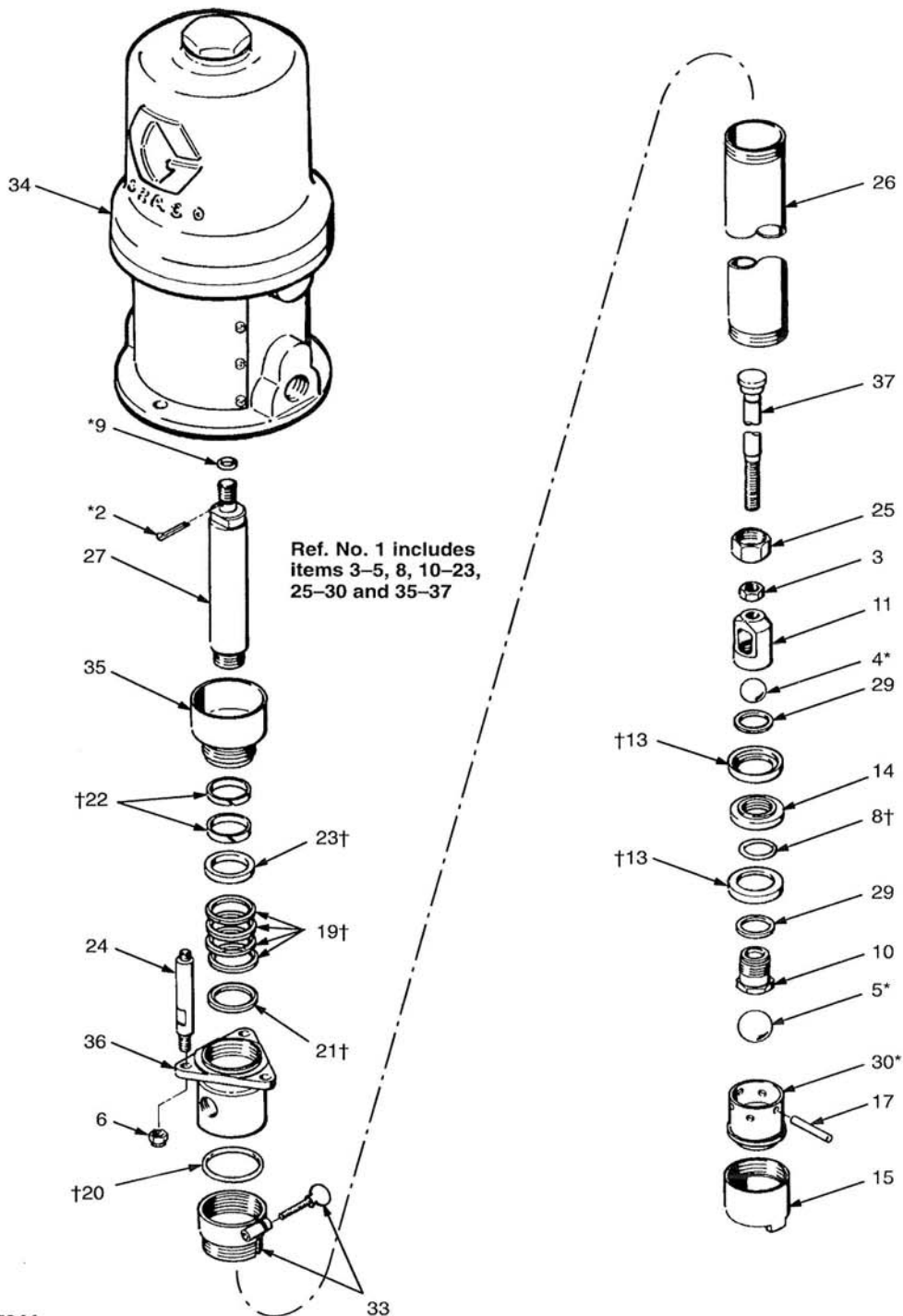
▲ If you have operators who do not read English, order one of the following labels from your Graco distributor. Paste the label over the English warning plate (43).

290460 FRENCH  
290461 GERMAN  
290462 SPANISH

PLEASE CALL FOR PRICING AND AVAILABILITY

# PARTS DIAGRAM FOR THE 5:1 DRUM PUMP

## Parts



PLEASE CALL FOR PRICING AND AVAILABILITY

## PARTS DIAGRAM FOR THE 5:1 DRUM PUMP

## Parts

## Model 218956, Series D

Includes items 1–37

Ref No.	Part No.	Description	Qty.	Ref No.	Part No.	Description	Qty.
1	220465	DISPLACEMENT PUMP		20†	164782	O-RING, PTFE	1
	Series D	Includes items 3–5, 8, 10–23, 25–30, and 35–37		21†	164837	GLAND, male	1
2*	100103	PIN, cotter; 0.12" (3.2 mm) dia.; 1/5" (38 mm) long	1	22†	165287	BEARING, PTFE	2
3	100111	NUT, jam; 0.5–20	1	23†	165288	GLAND, female	1
4*	100279	BALL, steel; 0.88" (22.4 mm) dia.	1	24	24B189	KIT, tie rod	3
5*	101178	BALL, steel; 1.25" (31.8 mm) dia.	1	25	166033	NUT, swivel	1
6	101566	NUT, lock; 0.19 thd	3	26	24C504	CYLINDER, stainless steel	1
8†	164623	O-RING, PTFE	1	27	24C496	ROD, displacement	1
9*	156082	O-RING, nitrile rubber	1	29	171594	WASHER, backup	2
10	156989	SEAT, piston	1	30*	204762	SEAT, intake valve	1
11	157184	HOUSING, piston	1	33	222308	ADAPTER, bung; with screw	1
13†	162871	PACKING, cup; PTFE	2	34	205997	AIR MOTOR;	
14	158857	SPACER, packing	1			See manual 307043 for parts	1
15	159839	HOUSING, intake valve	1	35	208312	NUT, packing	1
17	160726	PIN, stop	1	36	192188	HOUSING, outlet; 3/4 npt(f)	1
19†	162866	V-PACKING; PTFE	4	37	208314	ROD, piston	1

\* Recommended tool box spare parts. Keep these parts on hand to reduce down time.

† Included in Repair Kit 208520.

**PLEASE CALL FOR PRICING AND AVAILABILITY**

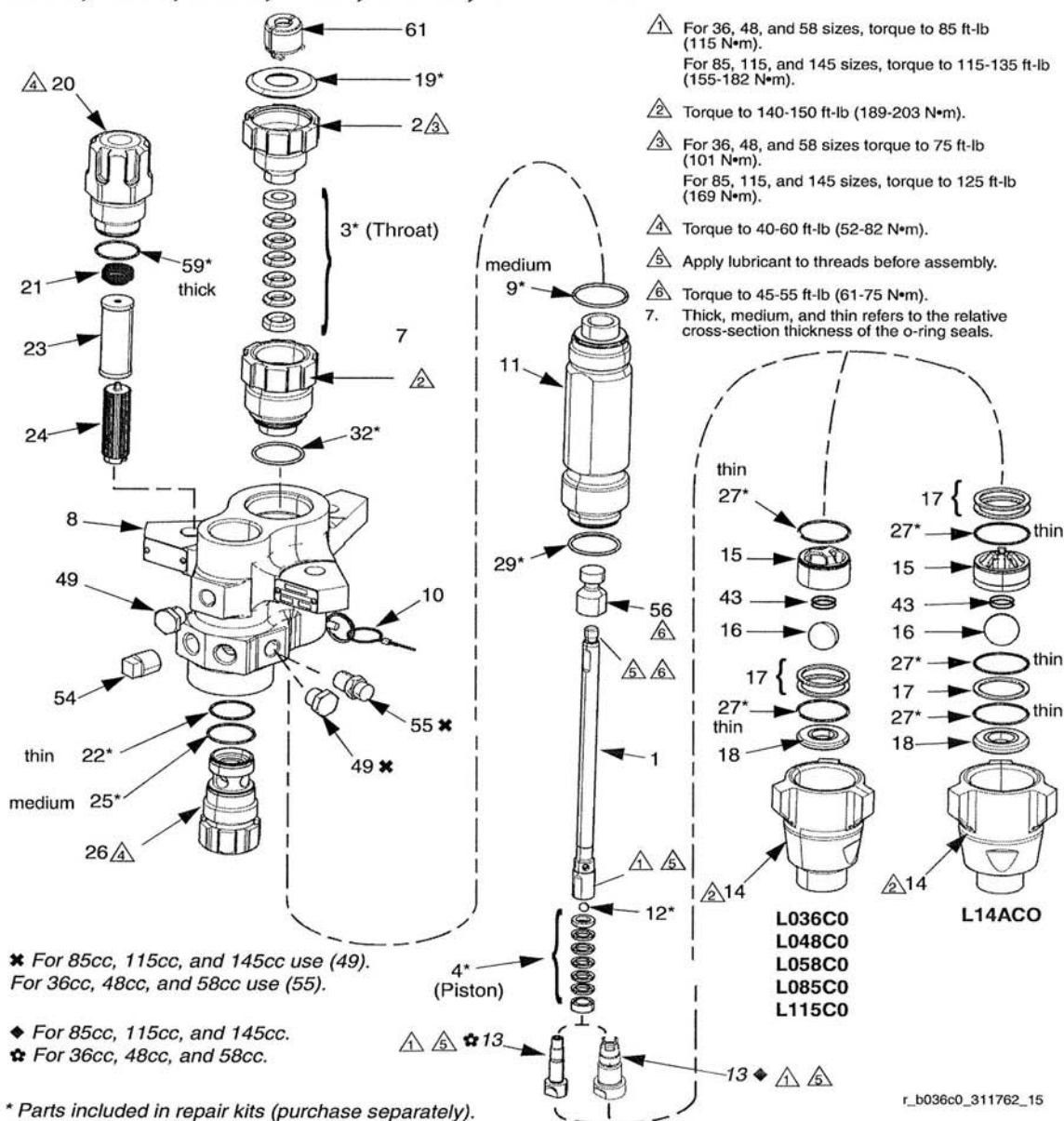
## PARTS DIAGRAM FOR THE XP70 FLUID CYLINDERS

## Parts

## Parts

## XP70 Sprayer Lower Models

**36cc, 48cc, 58cc, 85cc, 115cc, and 145cc**



\* Parts included in repair kits (purchase separately).  
See Repair Kits sections.



PLEASE CALL FOR PRICING AND AVAILABILITY

## PARTS DIAGRAM FOR THE XP70 FLUID CYLINDERS

Parts

## 35cc, 48cc, 58cc, 85cc, 115cc, and 145cc Models

Ref.	Descriptions	36cc	48cc	58cc	85cc	115cc	145cc	Qty.
		L036C0	L048C0	L058C0	L085C0	L115C0	L14AC0	
1	ROD, displacement	16D458	16D459	16D460	15J091	15J092	15J093	1
2	NUT, packing	16D468	16D468	16D468	15K029	15K029	15K030	1
3*	PACKINGS, stack; throat	See Repair Kits on page 23.						1
4*	PACKINGS, stack; piston	See Repair Kits on page 23.						1
7	CARTRIDGE, packing, throat	16D467	16D467	16D467	15F660	15F661	197325	1
8	HOUSING, outlet	15F659	15F659	15F659	15F659	15F659	16E151	1
9*	O-RING, top cylinder; PTFE, medium (10 pack)	288067	288067	288067	288067	288067	244892	1
10	PIN, self-locking	244826	244826	244826	244826	244826	244826	1
11	CYLINDER, lower	16D469	16D470	16D471	15F685	15F656	197315	1
12	BALL, piston (pack of 3)	262485	262485	262485	288065	288065	253029	1
13	VALVE, piston	16D464	16D464	16D464	15F669	15F657	197309	1
14	HOUSING, inlet	15F667	15F667	15F667	15F667	15F667	197303	1
15	GUIDE, ball, inlet	16D472	16D472	16D472	16D472	16D472	198646	1
16*	BALL, inlet (pack of 3)	244899	244899	244899	244899	244899	253031	1
17	SHIM, inlet, ball guide (pack of 9)	288064	288064	288064	288064	288064	244855 (3)	2 (3)
18	SEAT, inlet	15F665	15F665	15F665	15F665	15F665	196358	1
19*	PLUG, throat seal (pack of 10)	247393	247393	247393	247393	247393	15K021	1
20†	CAP, filter, top	16F270	16F270	16F270	16F270	16F270	16F269	1
21	SPRING, compression	171941	171941	171941	171941	171941	171941	1
22*†	O-RING, filter; thin, PTFE (10 pack)	244895	244895	244895	244895	244895	244895	1
23	STRAINER, 30 mesh screen; see page 25 for more options	236495	236495	236495	236495	236495	224458	1
24	SUPPORT, filter	188420	188420	188420	188420	188420	186075	1
25*†	O-RING, filter; medium, PTFE (10 pack)	262484	262484	262484	262484	262484	262484	1
26†	CAP, filter	16F268	16F268	16F268	16F268	16F268	16F268	1
27*	O-RING; foot valve, PTFE, thin (pack of 10)	288068 (2)	288068 (2)	288068 (2)	288068 (4)	288068 (4)	244890 (5)	(x)
29*	O-RING; cylinder bottom, PTFE (pack of 10) 256512 medium, 288068 thin	262512	262512	262512	288068	288068	288068	1
30▲	TAG, warning	172479	172479	172479	172479	172479	172479	1
32*	O-RING, PTFE, throat cartridge (10 pack) 256512 medium, 288068 thin	262512	262512	262512	288068	288068	288068	2
43	SPRING, foot valve	124007	124007	124007	124007	124007	116801	1
49	PLUG, pipe; 3/8 npt	198292	198292	198292	198292 (2)	198292 (2)	198292 (2)	1 (2)
54	PLUG, pipe; 1/2 in.	100737	100737	100737	100737	100737	100737	1
55	HOUSING, rupture disc assy	258962	258962	258962				1
56	ADAPTER, rod	15Y399	15Y399	15Y399				1
59*†	O-RING, filter; thick, PTFE (10 pack)	262483	262483	262483	262483	262483	262483	1
61	COUPLER, assembly	247167	247167	247167	247167	247167	244819	1

▲ Replacement Danger and Warning labels, tags, and cards are available at no cost.

\* Parts included in repair kits (purchase separately).

† See page 26 to verify correct part numbers.

Part numbers listed are for bulk quantities. Individual quantities are included in repair kits. See Repair Kits on page 23.



PLEASE CALL FOR PRICING AND AVAILABILITY

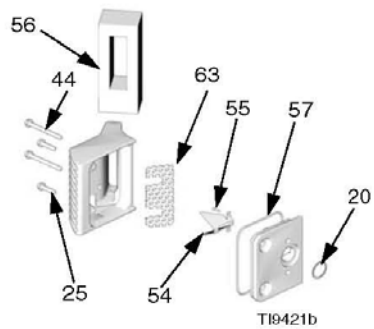
## PARTS DIAGRAM FOR THE NXT AIRMOTOR

Parts

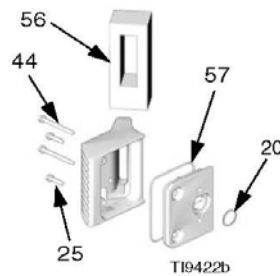
## Air Motor Parts Drawing (Shown with Linear Sensor)

Air Motor Model	Parts List Page
NXT Model 2200	30
NXT Model 3400	32
NXT Model 6500	34

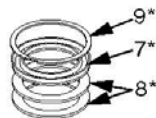
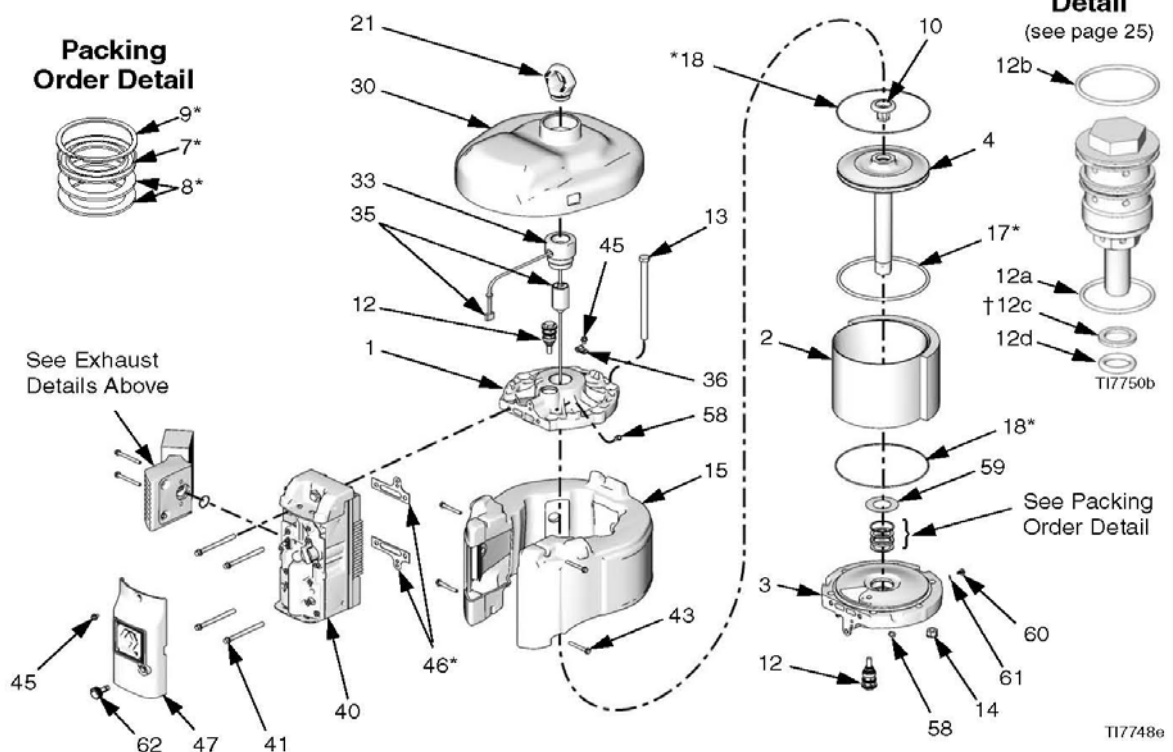
## Low Noise Exhaust (24) Detail



## De-Ice Exhaust (22) Detail



## Remote Exhaust (23) Detail

Packing  
Order DetailSee Exhaust  
Details Above

PLEASE CALL FOR PRICING AND AVAILABILITY

## PARTS DIAGRAM FOR THE NXT AIRMOTOR

## Parts

## NXT Model 6500 Air Motors

## NXT Model 6500 Common Parts

Ref.	Part	Description	Qty	Ref.	Part	Description	Qty
				14	15F639	NUT, with lockwasher; 1/2-13	6
				15	NXT603	MUFFLER	1
				17*	122675	O-RING, piston; nitrile	1
				18*	15F448	O-RING, end cap; nitrile	2
				20★	119990	O-RING; buna-N	1
1	15F953	COVER, top	1	21	15F931	RING, lift	1
2	NXT604	CYLINDER	1	41	120088	SCREW; 3/8-16 x 4 in. (101 mm)	4
3	NXT602	COVER, bottom	1	43	120091	SCREW, thread forming; 1/4-20 x 2 in. (51 mm)	4
4	NXT601	PISTON ASSEMBLY; includes item 10	1	44	120092	SCREW, thread forming; 1/4-20 x 2-1/2 in. (63 mm)	2
7*	161562	PACKING, V-block; nitrile	1	46*	253476	GASKET	1
8*	15H610	PACKING, backup; leather	2	47	287844	COVER, valve, outer	1
9*	16A026	RING, retaining	1	51▲	15F674	LABEL, safety	1
10	NXT106	BUMPER, piston; includes magnet	1	52▲	15F973	LABEL, safety	1
12	NXT100	POPPET; includes items 12a-12d	2	58	120206	MUFFLER, poppet	2
12a		. O-RING; buna-N	1	59	277366	BUMPER	1
12b		. O-RING; buna-N	1	60	116343	SCREW, ground; M5 x 0.8	1
12c†	NXT101	. O-RING, backup; buna-N	1	61	111307	WASHER, lock; 5 mm	1
12d		. O-RING; buna-N	1	62	NXT112	KNOB, de-ice	1
13	119050	BOLT, hex hd; 1/2-13 x 8 in. (203 mm)	6				

PLEASE CALL FOR PRICING AND AVAILABILITY

## PARTS DIAGRAM FOR THE NXT AIRMOTOR

Parts

## NXT Model 6500 Varying Parts

Ref.	Description	Air Motor Part Numbers										Qty
		N65DN0	N65DT0	N65DH0	N65LN0	N65LT0	N65LH0	N65RN0	N65RT0	N65RH0	257055	
22	KIT, de-ice exhaust; includes items 20, 25, 44, 56, 57	NXT110	NXT110	NXT110							NXT110	1
23	KIT, remote exhaust; includes items 20, 44							NXT105	NXT105	NXT105		1
24	KIT, low noise exhaust; includes items 20, 22, 25, 44, 54, 55, 56, 57				NXT104	NXT104	NXT104					1
25	SCREW, machine, hex hd; 1/4-20 x 1 in. (25 mm)	120730	120730	120730	120730	120730	120730				120730	2
30	COVER, top	15F877	15G574	15F880	15F877	15G574	15F880	15F877	15G574	15F880	15F880	1
33	ADAPTER, lift ring			15F772			15F772			15F772	15F772	1
35	SENSOR ASSEMBLY			287839			287839			287839	256893	1
36	GUIDE, strain relief			120143			120143			120143	120143	1
40	AIR VALVE ASSEMBLY; see page 37	NXT107	NXT108	NXT109	NXT107	NXT108	NXT109	NXT107	NXT108	NXT109	NXT109	1
45	SCREW, thread-forming; 1/4-20 x 1/2 in. (13 mm)	107257			107257			107257				1
			107257			107257			107257			3
				107257			107257			107257	107257	4
54★	DEFLECTOR				15H179	15H179	15H179					1
55★	SCREW, thread-forming; 1/4-20 x 1/2 in. (13 mm)				107257	107257	107257					2
56	SEAL, exhaust	15H190	15H190	15H190	15H190	15H190	15H190				15H190	1
57★	GASKET; buna-N	15K345	15K345	15K345	15K345	15K345	15K345				15K345	1
63★	DIFFUSER, exhaust				15G689	15G689	15G689					1
64	O-RING	108014	108014		108014	108014		108014	108104			1
65	ADAPTER, lift ring	16D001	16D001		16D001	16D001		16D001	16D001			1
66	O-RING	C20978	C20987		C20987	C20987		C20987	C20987			1

▲ Replacement Danger and Warning labels, tags, and cards are available at no cost.

\* Parts included in Repair Kit NXT600 (purchase separately).

★ Parts included in Low Noise Exhaust Conversion Kit NXT111 (purchase separately).

† Only used on original poppets (see FIG. 13) made prior to mid-2009.





PLEASE CALL FOR PRICING AND AVAILABILITY

## PARTS DIAGRAM FOR THE HUSKY 716

## 241407 and 241408 Parts List

## Fluid Section Parts List

Ref. No.	Part No.	Description	Qty
101	185622	COVER, fluid; aluminum	2
102	185624	MANIFOLD; aluminum; NPT	2
103	189220	LABEL, warning	1
105	112912	SCREW; 3/8-16; 2.25 in. (57.2 mm)	8
106	112913	NUT, hex; 3/8-16; sst	8
107	112914	WASHER, flat; 3/8 in.; sst	4
108	186207	BASE, feet	2
109	189540	CLAMP, vee	2
110	112499	NUT, clamp; 1/4-28	2
111	191079	STRIP, grounding	1
112*	102726	PLUG, steel; NPT	2
115†	110004	O-RING; PTFE	2
117	186205	LABEL, warning	1
121	102790	SCREW; 10-24; 0.31 in. (8 mm)	1
122	100718	LOCKWASHER; #10	1
123	100179	NUT, hex; 10-24	1
125*	100896	BUSHING, 3/4 X 1/2 npt	4
133	191837	PLATE, diaphragm, fluid side; sst	2
134	290045	PLATE, designation	1
136	194246	COVER air	2
139†	110636	O-RING; PTFE	8
140	113747	SCREW, flange; hex head	2
141	114882	SCREW, machine, torx	12
142	111183	RIVET (for plate 134)	2

## Air Motor Parts List

Ref. No.	Part No.	Description	Qty
1†	114866	PACKING, o-ring	2
2†	108808	PACKING, u-cup	2
3	112933	MUFFLER	1
4†	162942	PACKING, o-ring	2

6	195025	PLATE, diaphragm, air side	2
7†	15Y825	PLUNGER, carriage	2
8†	192595	CARRIAGE	2
9†	192596	PIN, carriage	2
10	192597	COVER, valve chamber	1
11	192602	HOUSING, center	1
12†	192765	GASKET	2
13	194247	COVER, exhaust	1
14†	194269	PLATE, valve	1
15	192601	SHAFT, diaphragm	1

## Guide Parts List

Ref. No.	Part No.	Description	Qty
201†	186776	GUIDE, polypropylene	4
202†	186777	STOP, polypropylene	4

## Ball Parts List

Ref. No.	Part No.	Description	Qty
301†	108944	BALL, buna-N	4

## Diaphragm Parts List

Ref. No.	Part No.	Description	Qty
16†	108808	PACKING, u-cup	2
401†	190148	DIAPHRAGM, buna-N	2

\* Item 112, 102726 used on 241408, item 125, 100896 used on 241407

† Included in Air Valve Repair Kit 241657

‡ Included in Fluid Section Repair Kit D05977



*For a lifetime of protection*

*Give corrosion the Bird*

---

13105 East 61st Street South, Suite A, Broken Arrow, OK 74012  
918-615-0020 office / 918-615-0140 fax  
[www.ravenlining.com](http://www.ravenlining.com)